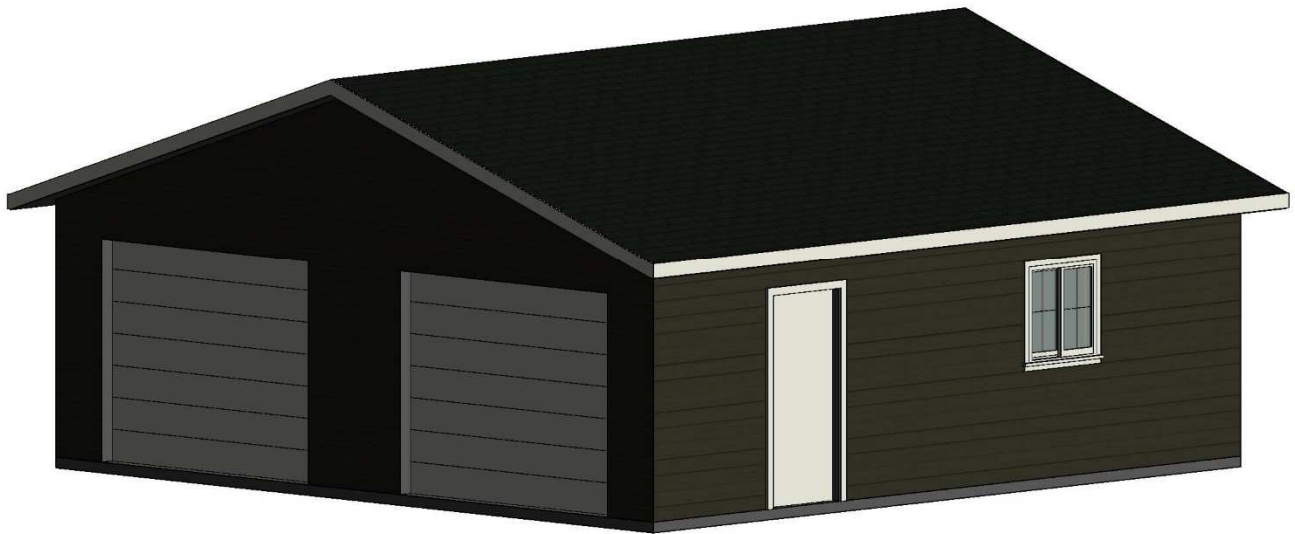


28 x 30 Garage

\$18,364.79

*Material Package Price
+ Applicable Taxes*



840 sqft.

Two 9' x 7' Overhead Doors



WESTMAN
LUMBER SUPPLY LTD.

Come see us to make your garage a reality!

(204) 726-5493

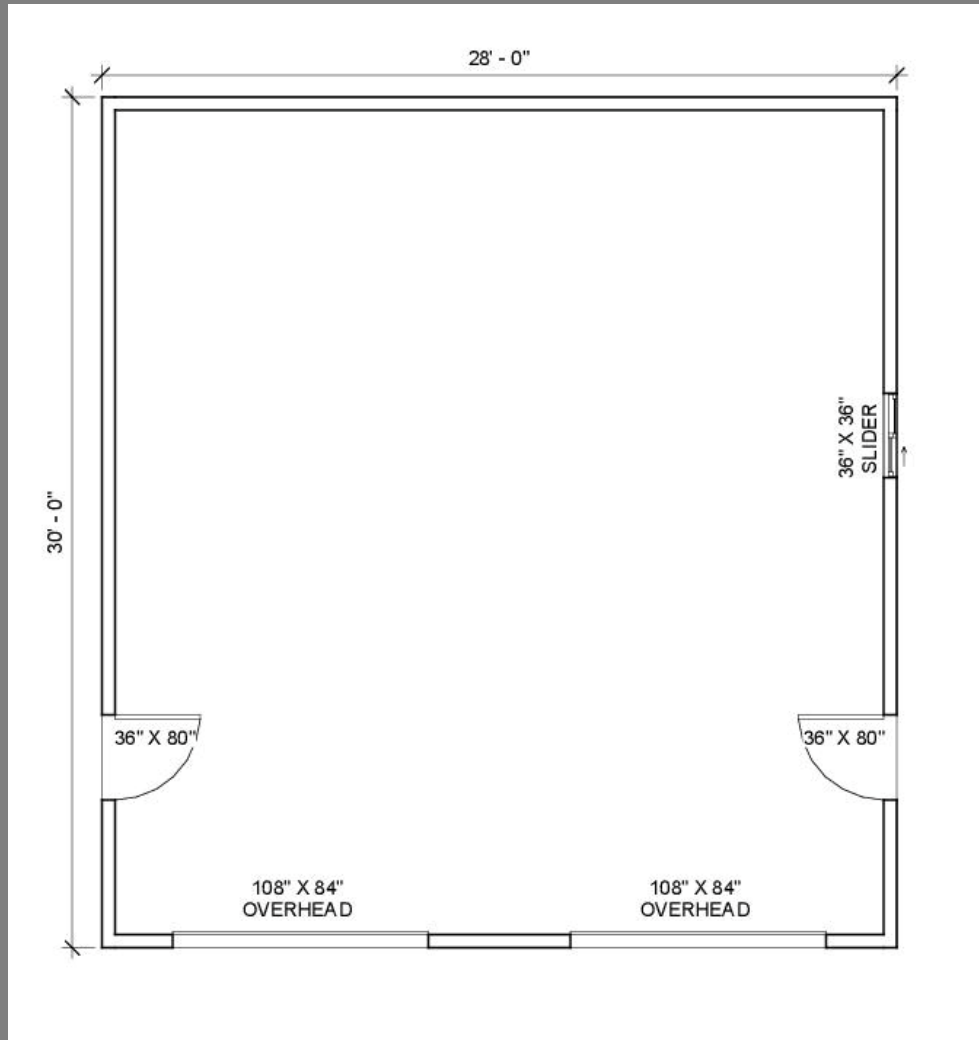
drafting@westmanlumber.com

Product Highlights

- Two 9' x 7' Insulated Overhead Doors with Opener
- Rebar Included for Thickened Edge Slab
- Complete 2x6 Framing Package
- Mitten White Vinyl Siding
- IKO Cambridge 30 Year Shingles
- Two 36" x 80" Man Door
- One 36" x 36" PVC Slider
- Insulated and Drywall

Website: www.westmanlumber.com

Address: Unit #2 1875 Middleton Ave, Brandon, MB
R7C 1A7



Foundation Package

Foundation: \$1,469.00

Foundation Package Includes:

- All Hardware and Fasteners
- All Rebar for Thickened Edge Slab

No Concrete Priced in Package

Garage Package

Garage Package: \$16,895.79

This is a material package price

Garage Package Includes:

- Engineered Roof Truss Package
- IKO Cambridge 30 Year Shingles
- Mitten Vinyl Siding
- One 36" x 36" PVC Slider
- Two 36" x 80" Man Door
- All Hardware and Fasteners
- 2x6 Studs @ 16" O.C.
- Drywall and Insulation
- Two 9'x7' Overhead Door with Opener

Come see us at Westman Lumber Supply!



WESTMAN
LUMBER SUPPLY LTD.