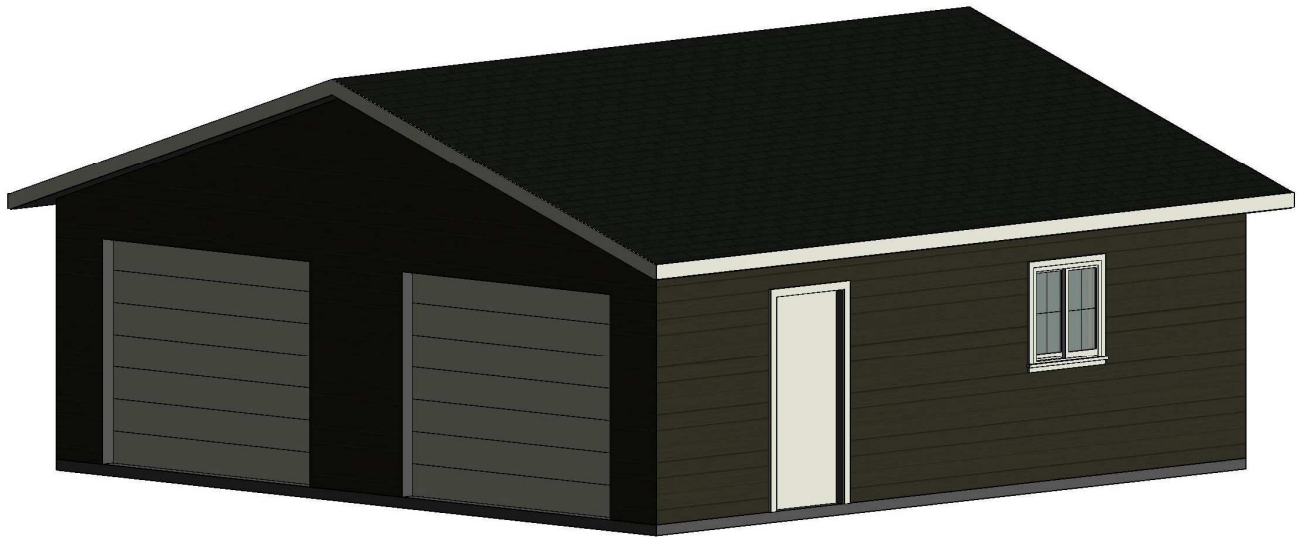


# 26 x 26 Garage

**\$15,809.43**

Material Package Price  
+ Applicable Taxes



676 sqft.

Two 9' x 7' Overhead Doors



**WESTMAN**  
LUMBER SUPPLY LTD.

**Come see us to make your garage a reality!**

(204) 726-5493

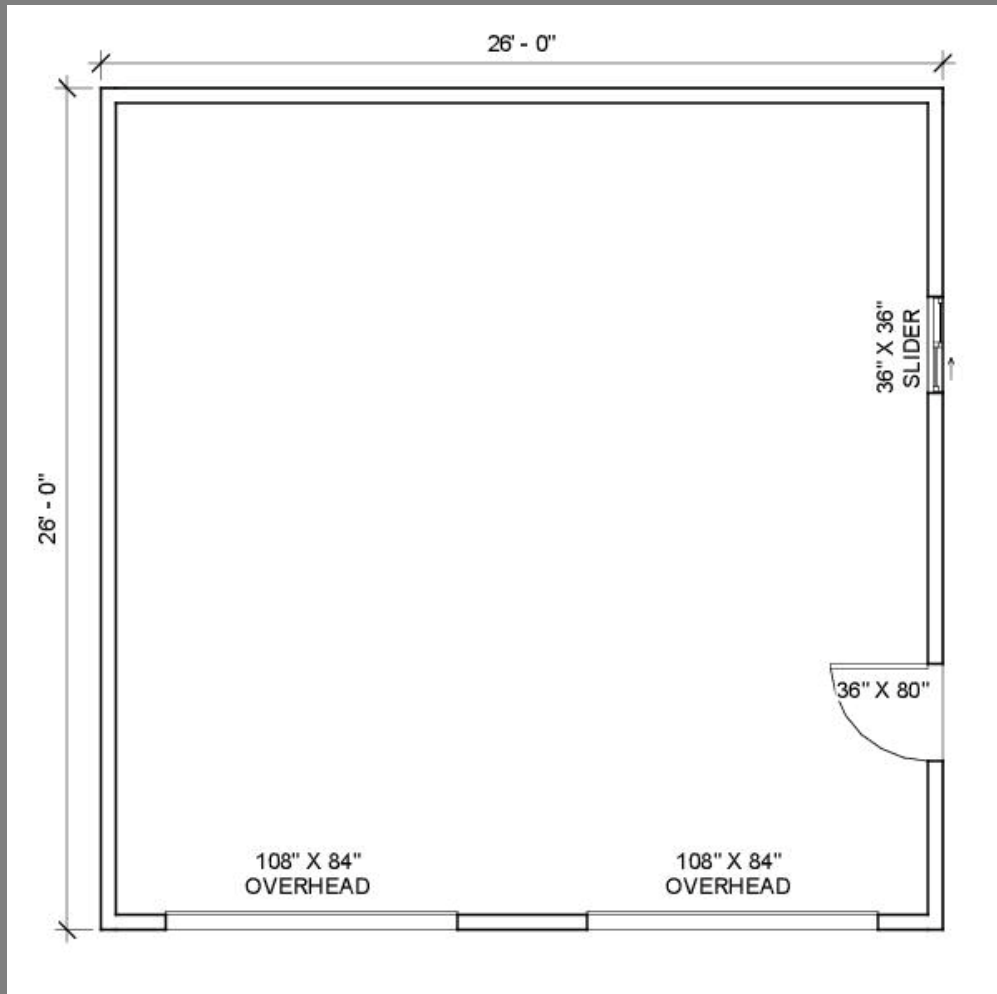
[drafting@westmanlumber.com](mailto:drafting@westmanlumber.com)

## Product Highlights

- Two 9' x 7' Insulated Overhead Doors with Opener
- Rebar Included for Thickened Edge Slab
- Complete 2x6 Framing Package
- Mitten White Vinyl Siding
- IKO Cambridge 30 Year Shingles
- One 36" x 80" Man Door
- One 36" x 36" PVC Slider
- Insulated and Drywall

Website: [www.westmanlumber.com](http://www.westmanlumber.com)

Address: Unit #2 1875 Middleton Ave, Brandon, MB  
R7C 1A7



## Foundation Package

Foundation: \$1,147.71

Foundation Package Includes:

- All Hardware and Fasteners
- All Rebar for Thickened Edge Slab

No Concrete Priced in Package

## Garage Package

Garage Package: \$14,261.72

This is a material package price

Garage Package Includes:

- Engineered Roof Truss Package
- IKO Cambridge 30 Year Shingles
- Mitten Vinyl Siding
- One 36" x 36" PVC Slider
- One 36" x 80" Man Door
- All Hardware and Fasteners
- 2x6 Studs @ 16" O.C.
- Drywall and Insulation
- Two 9'x7' Overhead Door with Opener

Come see us at Westman Lumber Supply!

