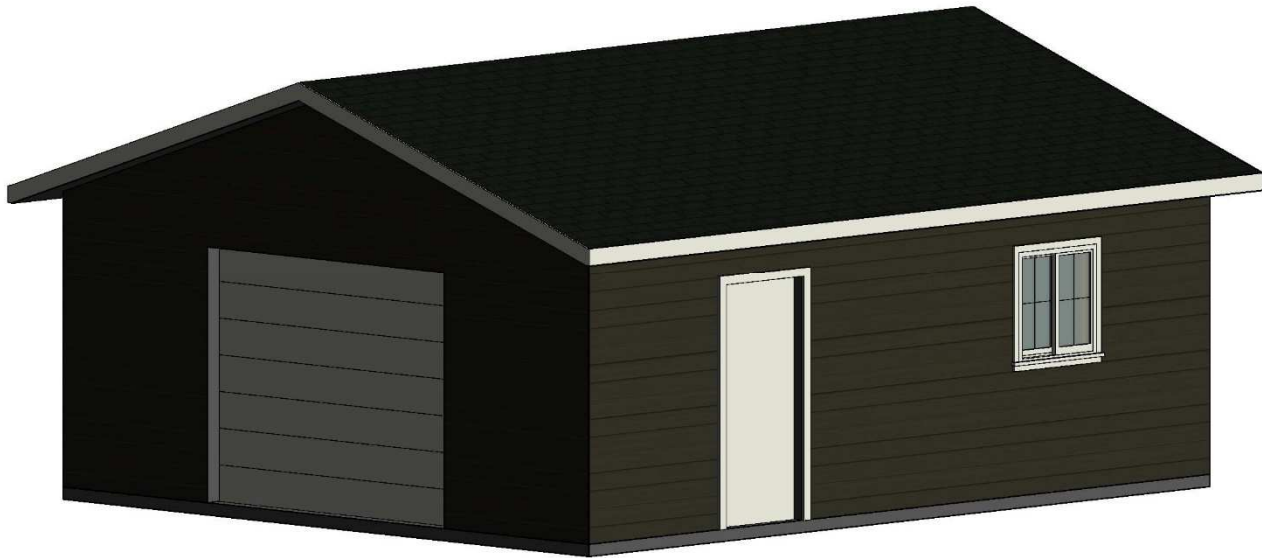


# 20 x 24 Garage

**\$11,985.16**

*Material Package Price  
+ Applicable Taxes*



480 sqft.  
9' x 7' Overhead Door



**Come see us to make your garage a reality!**

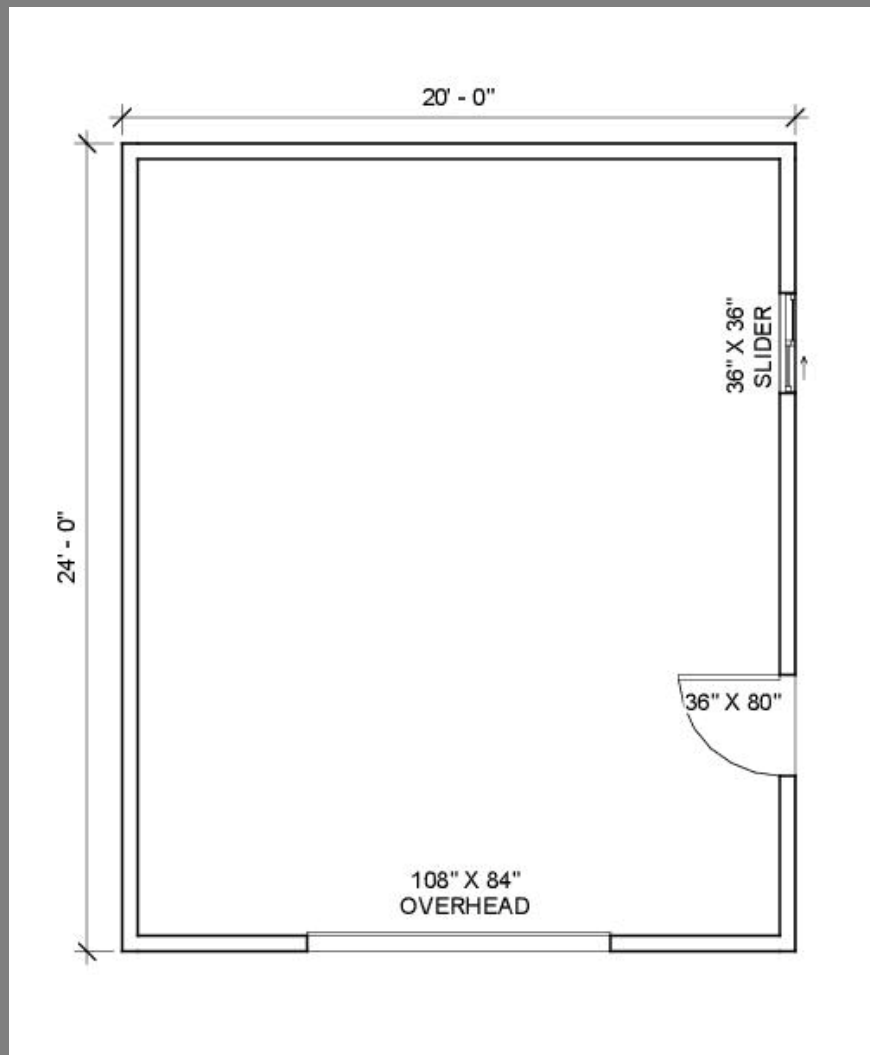
(204) 726-5493  
drafting@westmanlumber.com

## Product Highlights

- 9' x 7' Insulated Overhead Door with Opener
- Rebar Included for Thickened Edge Slab
- Complete 2x6 Framing Package
- Mitten White Vinyl Siding
- IKO Cambridge 30 Year Shingles
- One 36" x 80" Man Door
- One 36" x 36" PVC Slider
- Insulated and Drywall

Website: [www.westmanlumber.com](http://www.westmanlumber.com)

Address: Unit #2 1875 Middleton Ave, Brandon, MB  
R7C 1A7



## Foundation Package

Foundation: \$1,104.62

Foundation Package Includes:

- All Hardware and Fasteners
- All Rebar for Thickened Edge Slab

No Concrete Priced in Package

## Garage Package

Garage Package: \$10,880.54

This is a material package price

Garage Package Includes:

- Engineered Roof Truss Package
- IKO Cambridge 30 Year Shingles
- Mitten Vinyl Siding
- One 36" x 36" PVC Slider
- One 36" x 80" Man Door
- All Hardware and Fasteners
- 2x6 Studs @ 16" O.C.
- Drywall and Insulation
- 9' x 7' Overhead Door with Opener

Come see us at Westman Lumber Supply!



**WESTMAN**  
LUMBER SUPPLY LTD.